



Sine-wave drive

U600

**INTELLIGENT POWER OUTPUT
EXPERIENCE PAINLESS TREATMENT**



FDA CE 0197

Scan and Login website for more information



E1

120° angle holder. Swishing anterior teeth coordinated with swished file after root canal preparation.

E2

95° angle holder. Swishing posterior teeth coordinated with swished file after root canal preparation.

E3

Using ultrasonic melt to press gutta-percha for lateral pressure, used in E mode without water.

E6

SPECIAL MATERIAL
Thin and flexible, used for removing foreign body in deep cannal.

E7

SPECIAL MATERIAL
Thin and flexible, used for removing foreign body in 1/3 cannal.

E3D

Diamond-coated(40µm) instrument for removing calcification and bad filling material in root canal.

P4D

Diamond coated(40µm), used for removing the calcification in the coronal third of the root canal and used in E mode.

G4

The Universal gingival tip for removing Supragingival calculus and plaque.

G5

Used for supragingival scaling with smooth vibration and low noise characteristics.

G6

Used for removal supragingival calculus and plaque chunks, can use directly tip in small power, with a smooth vibration and low noise characteristics.

G30

Diamond-coated(40µm), used for preparation between pits and fissures.

G31

Diamond-coated(40µm), used for preparation of mesioclusion cavity and does not damage adjacent teeth.

G32

Diamond-coated(40µm), used for preparation of distal mesial cavity and does not damage adjacent teeth.

G33

Diamond-coated(40µm), used for preparation to dental veneer.

SB2

Diamond-coated(40µm), use with G31. After the mesioclusion cavity is completed with G31, used for the cavity inside and outside which hard to reach the outer area of preparation and polishing.

SB3

Diamond-coated(40µm), used with G32. After the distal mesial cavity is completed with G32, used for the cavity inside and outside which hard to reach the outer area of preparation and polishing.

P1

The universal subgingival tip for periodontal pocket within 4mm and adjacent surface scaling.

P3

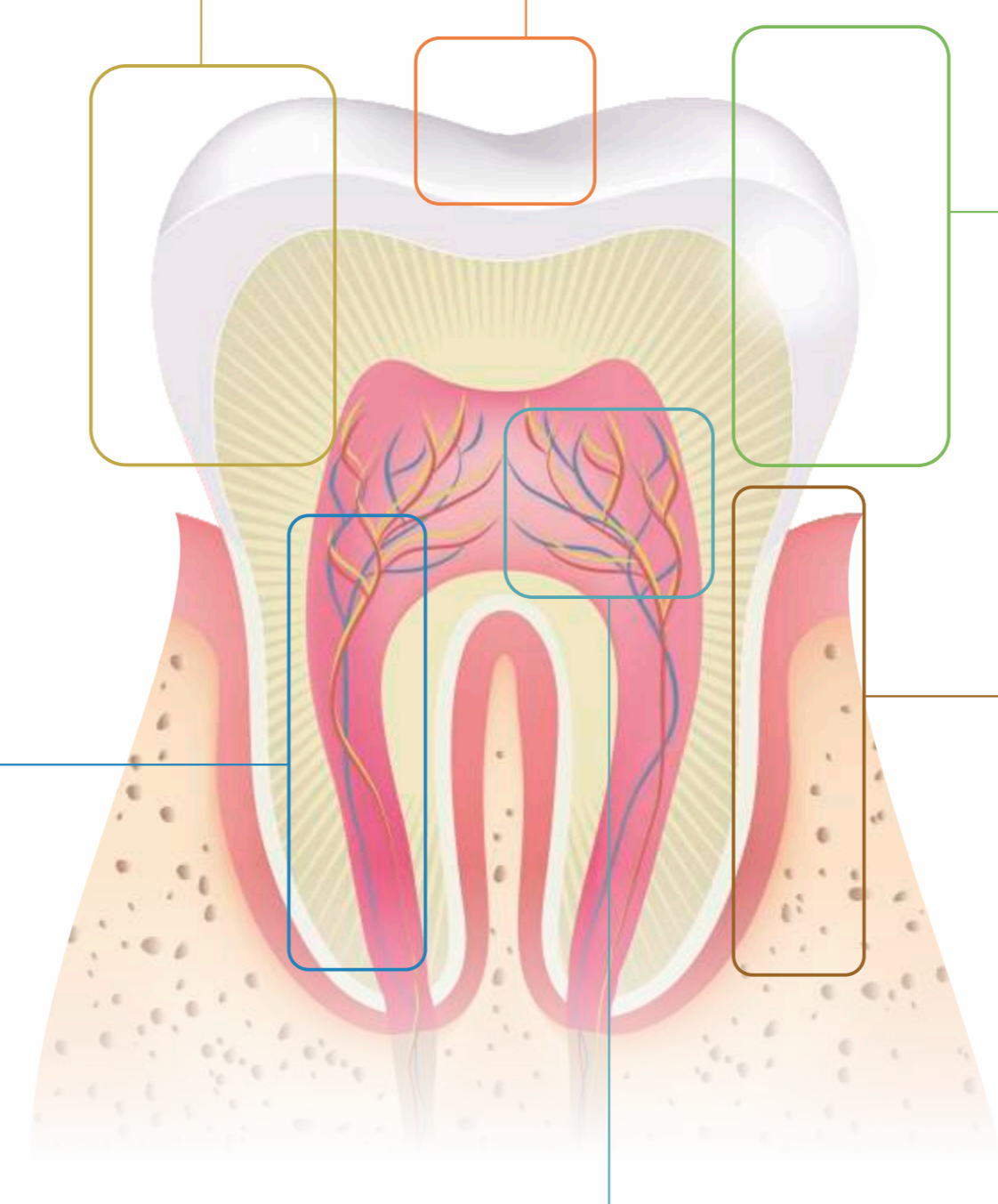
Diamond-coated(40µm), used with G32. After the distal mesial cavity is completed with G32, used for the cavity inside and outside which hard to reach the outer area of preparation and polishing.

P4

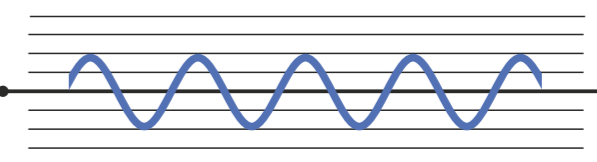
Efficient removal of within 2mm Subgingival calculus.

P3D

Diamond-coated(40µm), used for expanding furcation and root surface polishing in flap surgery.

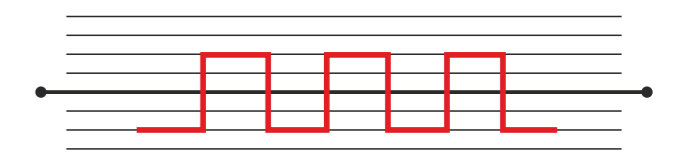


SINE-WAVE DRIVE



U600 Mild power output

Optimum vibration of tips
Intelligent negative feedback
The best treatment effect
Top comfort



Other scaler Rectangular power output

COMPLETE FUNCTIONS

Supragingival scaling



Subgingival scaling

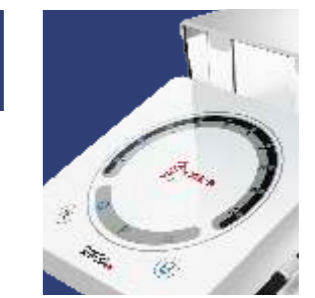


Endo canal cleaning

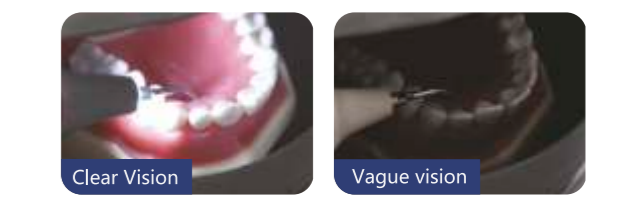


SMART TOUCHING TECHNIQUE SYSTEM

Clear control panel
Ultra-sensitive
Waterproof design



U600 LED
· Detachable handpiece with light, better visibility; new sealing technique applied to handpiece, patients feel more comfortable.



GUILIN WOODPECKER MEDICAL INSTRUMENT CO., LTD.

Registration Add & Manufactory Add:
Information Industrial Park, Guilin National High-Tech
Information Park 541004 Guilin, Guangxi China
Tel:
Europe Sales Dept.: +86-773-5873196, +86-773-2125222
North America, South America &
Oceania Sales Dept.: +86-773-5873198, +86-773-2125123
Asia & Africa Sales Dept.: +86-773-5855350, +86-773-2125896
Fax: +86-773-5822450
E-mail: woodpecker@glwoodpecker.com, sales@glwoodpecker.com
Website: http://www.glwoodpecker.com

Distributor:



texDAN

texDAN s.r.o., Havlíčkova 437, 542 32 Úpice; IČ: 287 68 591
mobil: +420 739 693 258, +420 603 558 500
info@woodpecker.cz www.woodpecker.cz

5 5 5 È [[å] ^ & \ ^ | È &