

TAPIA CONTACT SHAPER

NEW!



The Tapia Contact Shaper is an innovative molar-form-inspired matrix burnisher and composite plugger, developed in cooperation with Dr. Javier Tapia, international lecturer and co-founder of the Bio-Emulation™ Group.



LM feel the difference

NATURAL
CONTACTS.
ANATOMICAL
SHAPE.
BETTER
RESULTS.



MATRIX BURNISHING REDEFINED. INSPIRED BY NATURAL FORMS.

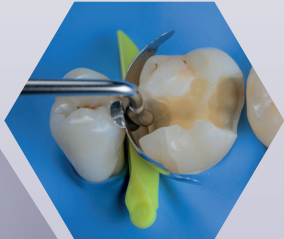
The molar-like form inspired tip design of Tapia Contact Shaper improves matrix burnishing in posterior restorations by enabling to shape a contact that closely follows the natural tooth anatomy.



NATURAL CONTACT SHAPES

Shapes the matrix into a natural, anatomically correct proximal contour before and during the composite placement while burnishing it into a contact area

Helps to avoid point-like contacts tend to form while using regular ball burnishers



BROAD SURFACE PRESSURE

Enables broad, even and controlled surface pressure to the matrix for anatomically accurate contours



The instrument functions also as a composite plugger allowing the matrix burnishing and composite adaptation with one instrument.

GENTLE COMPOSITE ADAPTATION

Supports gentle and controlled placement and adaptation of composite materials

CONSISTENT WALL FORMATION

Helps to maintain consistent contact formation and wall thickness, not over- or under-contouring (risk if using round or flat tips)

SUPPORTS ADVANCED TECHNIQUES

Makes it easier to model concave dentin surfaces in bilaminar restorations

