

A black and white photograph showing a row of dental resin specimens on a tray. The specimens are arranged in a line, each with a different shape and texture. They are mounted on a dark, flat surface. The lighting is dramatic, highlighting the intricate details of the resin structures. The background is dark, making the white resin stand out.

RAYSHAPE

***ShapeMaterials
Dental Resins***

Contents

Introduction	2
Model 1	4
DT	5
Record Model	6
TT	7
Soft Pink	8
Ortho Model	9
Cast	10
SG	11
Technical Support	12

ShapeMaterials Dental Resins

- ✓ Developed primarily for dental applications and approved by dental specialists.
- ✓ Our selection of dental resins is designed to make full use of RAYSHAPE 3D printers.
- ✓ The resins are built to achieve equivalent or superior results while providing better value for money.
- ✓ The materials are compatible with both our LCD and DLP printers.



**Tested and approved by
dental specialists**



Every time before printing
Make sure that the build plate is
clockwise-locked.

When the build plate is tightened
The blue mark on the knob should
show up in front of you.



● Orange ● Grey ● Ivory Net Weight: 1 kg

Model 1 Resin

Designed For Accurate Dental Models

Model 1 resin has excellent surface strength, fast curing speed, and accuracy with dimensional stability. The excellent material properties can meet the production requirements for high-precision dental models.

Benefits

- ✔ Rigid Surface
- ✔ Affordable
- ✔ Accurate
- ✔ Fast Printing

Applications

- 🦷 Implant model
- 🦷 Orthodontic model
- 🦷 Model with dies
- 🦷 Restoration model

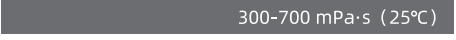
ROI

Amount: 21.6 g/set
38 printed model with a
bottle of 1KG



Viscosity

Lower viscosity values indicate that the resin is easier to mix.



Flexural Strength

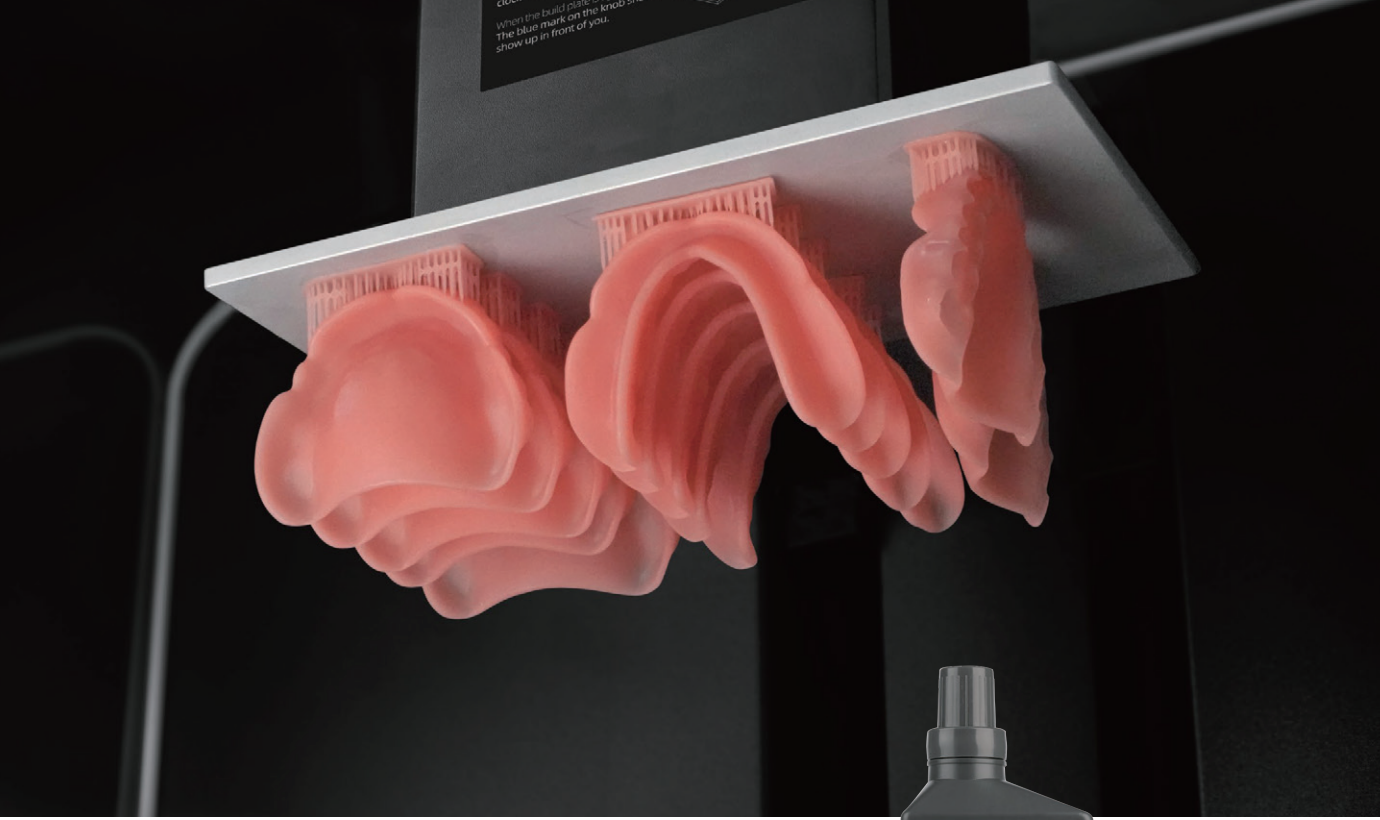
Higher flexural strength ensures that the model doesn't break during regular use.



Flexural Modulus

Higher flexural modulus prevents the model from distorting, which can impact accuracy.





DT Resin

Designed For Denture Base applications

RAYSHAPE DT resin material with an excellent mechanical property suitable for printing removable denture base.



● Pink Net Weight: 1 kg

Benefits

- ✔ Low Shrinkage
- ✔ Accurate
- ✔ Fine Detail Reproduction
- ✔ Long-term stability

Applications

- ☺ Removable denture base

ROI

Amount: 15.9 g/set
50 printed model with a
bottle of 1KG



Viscosity

Lower viscosity values indicate that the resin is easier to mix.

1200-1500 mPa·s (25°C)

Flexural Strength

Higher flexural strength ensures that the model doesn't break during regular use.

90-95 MPa

Flexural Modulus

Higher flexural modulus prevents the model from distorting, which can impact accuracy.

2400-2600 MPa



Record Model Resin

For Tough & Precise Record Models

With an excellent surface strength, Record Model resin designed to print 3D models with a texture and color similar to the traditional plaster model.



○ White Net Weight: 1 kg

Benefits

- ✔ Precise
- ✔ Accurate
- ✔ Affordable

Applications

- 🦷 Record

ROI

Amount: 80.3 g/set
10 printed model with a bottle of 1KG



Viscosity

Lower viscosity values indicate that the resin is easier to mix.

350 mPa·s (25°C)

Flexural Strength

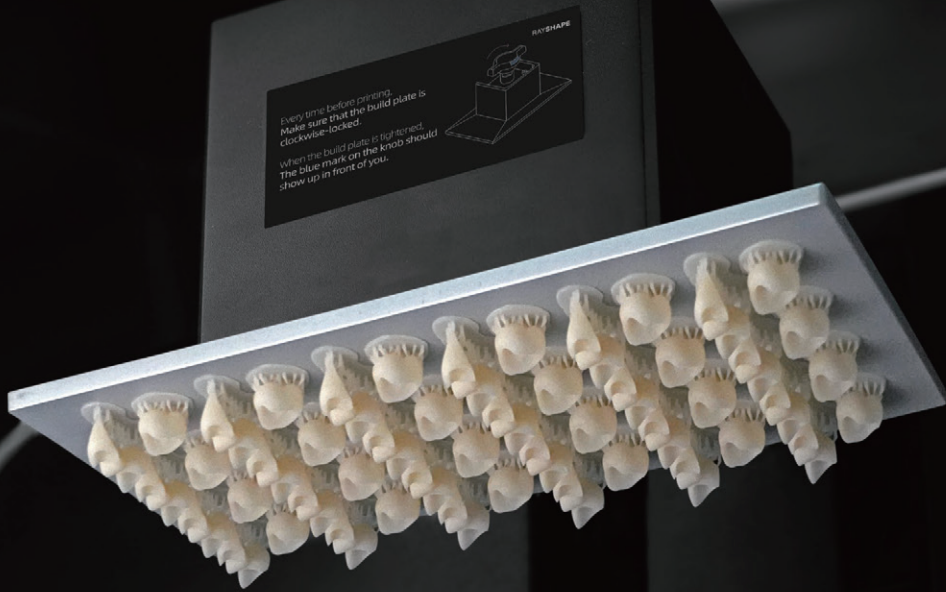
Higher flexural strength ensures that the model doesn't break during regular use.

50.4 MPa

Flexural Modulus

Higher flexural modulus prevents the model from distorting, which can impact accuracy.

1700 MPa



○ Ivory A2 ○ Ivory A3 Net Weight: 1 kg

TT Resin

For Accurate, Enduring Restorations & Denture Teeth

TT Resin by RAYSHAPE is a material for 3D printing crowns, bridges, inlays, onlay, denture teeth and veneers. This material is easy to finish and polish using traditional methods for temporary restorations. Available in A2, A3

Benefits

- ✔ Precise
- ✔ Accurate
- ✔ Easy to Polish
- ✔ Long-term Dimensional Stability

Applications

- ☺ Crowns and Bridges
- ☺ Denture Teeth

ROI

2.5 g/set Restorations.
292 printed model with a bottle of 1KG



10.2 g/set Restorations.
75 printed model with a bottle of 1KG



Viscosity

Lower viscosity values indicate that the resin is easier to mix.

1200-1500 mPa·s (25°C)

Flexural Strength

Higher flexural strength ensures that the model doesn't break during regular use.

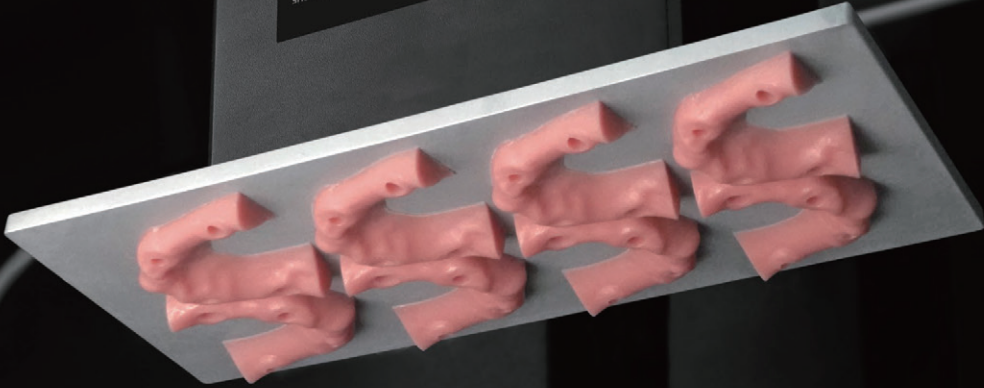
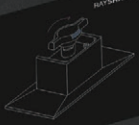
93-98 MPa

Flexural Modulus

Higher flexural modulus prevents the model from distorting, which can impact accuracy.

2400-2600 MPa

Every time before printing,
Make sure that the build plate is
clockwise-locked.
When the build plate is tightened,
The blue mark on the knob should
show up in front of you.



● Pink Net Weight: 1 kg

Soft Pink Resin

For Gingival Masks

Perfect for gingival masks, convenient, removable, and functional.
Looks natural, like human gum.

Benefits

- ✔ Low Shrinkage
- ✔ Flexible
- ✔ Accurate

Applications

☺ Gingiva

ROI

Amount: 0.7 g/set
1000 printed model with a
bottle of 1KG



Viscosity

Lower viscosity values indicate that the resin is easier to mix.

500 mPa·s (25°C)

Elongation

362 %

Ultimate Tensile Strength

3.2 MPa

Every time before printing, make sure that the build plate is clockwise-locked.
When the build plate is in place, the blue mark on the knob should show up in front of you.



● Orange ● Grey ● Ivory Net Weight: 1 kg

Ortho Model Resin

Ideal for Orthodontic Models

RAYSHAPE Ortho Model combines accuracy and precision to set brackets with flexibility accurately. It is ideal for orthodontic models. Using Ortho Model dental resin will save you time and labor for a more efficient workflow.

Benefits

- ✔ Precise
- ✔ Flexible
- ✔ Accurate
- ✔ Low Shrinkage

Applications

- U Splints
- U Orthodontic model
- U Aligners

ROI

Amount: 8.9 g/set
93 printed model with a bottle of 1KG



Viscosity

Lower viscosity values indicate that the resin is easier to mix.

387 mPa·s (25°C)

Flexural Strength

Higher flexural strength ensures that the model doesn't break during regular use.

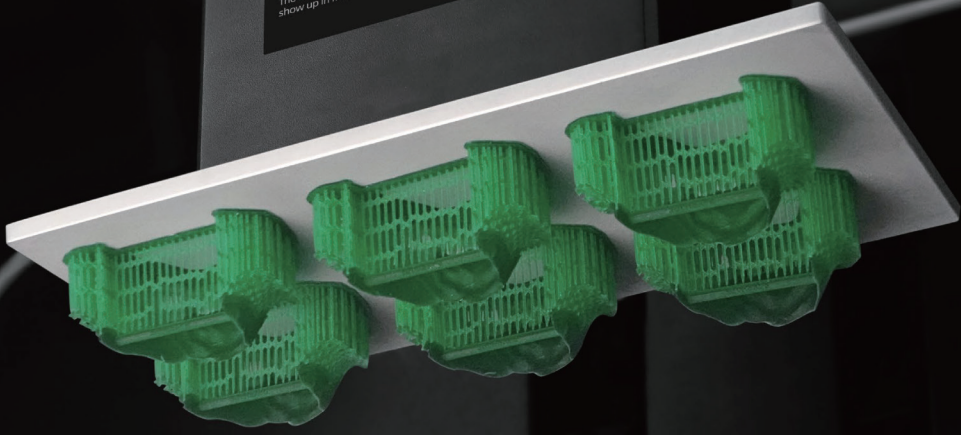
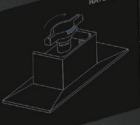
89 MPa

Flexural Modulus

Higher flexural modulus prevents the model from distorting, which can impact accuracy.

3050 MPa

Every time before printing,
Make sure that the build plate is
clockwise-locked.
When the build plate is tightened,
The blue mark on the knob should
show up in front of you.



Cast Resin

Designed For Accurate & Fast Molding

Cast resin offers accurate molding with rapid burnout, visible printing details, and sealed margin to ensure a reliable casting afterward. Cast Resin is used with (chrome, cobalt)

● Green Net Weight: 1 kg

Benefits

- ✔ Fast
- ✔ Low Shrinkage
- ✔ Accurate

Viscosity

Lower viscosity values indicate that the resin is easier to mix.



Applications

🔧 Casting

Elongation



ROI

Amount: 2.7 g/set
276 printed model with a
bottle of 1KG

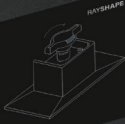


Ultimate Tensile Strength



Every time before printing,
Make sure that the build plate is
clockwise locked.

When the build plate is tightened,
The blue mark on the knob should
show up in front of you.



● Translucent Net Weight: 1 kg

SG Resin

For Transparent & Precise Surgical Guides

SG resin from RAYSHAPE for precise and accurate surgical guides. Transparent surgical guides allow dental practices to place implants at the correct angle with precision and accuracy.

Benefits

- ✓ Precise
- ✓ Easy to Polish
- ✓ Transparent
- ✓ Affordable

Applications

- 🦷 Surgical guide

ROI

Amount: 18.9 g/set
42 printed model with a
bottle of 1KG



Viscosity

Lower viscosity values indicate that the resin is easier to mix.

450 mPa·s (25°C)

Flexural Strength

Higher flexural strength ensures that the model doesn't break during regular use.

84 MPa

Flexural Modulus

Higher flexural modulus prevents the model from distorting, which can impact accuracy.

2550 MPa

Technical Support Provided

We offer fast and quality support worldwide
and via our resellers and partners

Email address

support.os@rayshape3d.com



Scan me