

RAYSHAPE

Digital Dentistry Solutions

Ideal For Dental Practices & Labs



Contents

About us	02
RAYSHAPE technology	03
Dental applications	04
Product line	06
Comparison table	09
Post-processing machines	11
Dental resins	11
Software	13
Testimonials	14
Technical support	15



Who we are

RAYSHAPE is an innovation-driven technology company that provides full-line 3D printing solutions. The primary industries that RAYSHAPE focuses on are digital dentistry, manufacturing, microfluidics, electronic component, education, and cultural and creative industries.

Our mission is to enhance users' practices and become a global player in the 3D printing business.

Our vision makes RAYSHAPE a brand that resonates with our customers' and partners' needs.





Technology

3D printing solutions for dentistry should consistently deliver exceptional results. Here's what makes RAYSHAPE's technology reliable.



Reliability and Accuracy

RAYSHAPE printers adopt one of their most reliable optical engines to ensure accurate layer thickness and surface quality.



Open System

Compatible with the market's most known 3rd party resin brands like Detax, Saremco, Kulzer, KeyPrint and others.



User-friendly

Our solutions are user-friendly and easy to operate for the users.

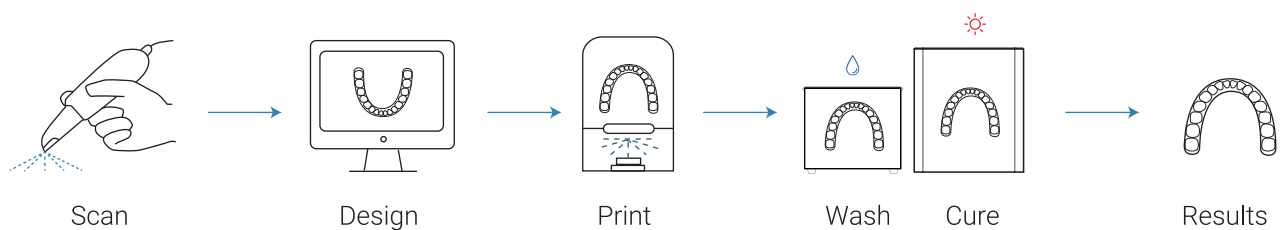


High Printing Efficiency

Using the low peeling force feature guarantees that 3D printers are cost-effective.

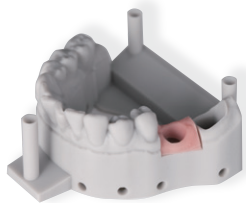
A validate workflow

RAYSHAPE ensured that every stage in the workflow was carefully controlled and validated by dental professionals. From the **Print, Wash, Cure**, to the **Post process**.





Dental Lab



Gingiva

Print time 33 min / 32 pieces
 Layer thickness 0.05mm
 Color ● Pink



Model with Dies

Print time 60min / 2 sets
 Layer thickness 0.05mm
 Color ● Orange ● Grey ● Ivory



Record Model

Print time 210 min / 6 pieces
 Layer thickness 0.05mm
 Color ○ White



Clear Aligner

Print time 26 min / 3 pieces
 Layer thickness 0.10mm
 Color ● Orange ● Grey ● Ivory



Casting

Print time 69 min / 4 pieces
 Layer thickness 0.05mm
 Color ● Green



Teeth Whitening Tray

Print time 26 min / 3 pieces
 Layer thickness 0.10mm
 Color ● Orange ● Grey ● Ivory



Bio-compatible (open system)



Try-In

Print time 136 min / 5 pieces
 Layer thickness 0.1mm
 Color ● Stone



Surgical Guide

Print time 39 min / 3 pieces
 Layer thickness 0.1mm
 Color ● Clear



Splint / Night guard

Print time 33 min / 4 pieces
 Layer thickness 0.1mm
 Color ● Clear



Denture

Print time 153 min / 6 pieces
 Layer thickness 0.1mm
 Color ● Pink



Indirect Bonding Tray

Print time 56 min / 4 pieces
 Layer thickness 0.1mm
 Color ● Clear



Temporary Restoration

Print time 43 min / 15 sets
 Layer thickness 0.1mm
 Color ● Stone A2/A3



Custom Tray

Print time 60 min / 1 pair
 Layer thickness 0.1mm
 Color ● Purple ● Blue



Edge E1 Entry Level

The Ideal Choice To Get Digital

An 8.9" 4K mono LCD screen can be filled with full upper and lower arches ready for making aligners, study models, dentures, splints, and other dental applications.

Designed for new customers newly in the digital dentistry era. The 3D printer delivers speed, accuracy, and successful prints.

Applications:

- Surgical guides
- Custom trays
- Record Model
- Models with Dies
- Clear Aligner
- Splints
- Try-in
- Indirect bonding trays
- Teeth Whitening Trays
- Temporary restoration
- Gingiva
- Denture



Fast

Fast printing for an entire platform



Open system

Compatible with 3rd party resin brands



User-friendly

Well-designed and easy to operate



Technical support

Fast and quality support

Technical Specifications	
Build volume	7.56 × 4.72 × 7.48 inch (192 × 120 × 190 mm)
Pixel Size	50 μm
Dynamic Layer Thickness	0.05~0.1 mm
Technology	LCD
Print Speed	Up to 40mm (1.5 inches) / 1 hour (Depending on the resin type and slicer settings)
Materials	ShapeMaterials Dental Series / Open System
Touchscreen	7"
Device Dimension	15.35×16.54×21.06 inch (390×420×535 mm)



Shape 1+ Dental [Professional 3D printer](#)

Designed For Dental Practices & Labs

The professional machine is plug-and-play without maintenance hassles. Equipped with the long-service-time DLP light engine, users don't need to pay attention to repairing or replacing any optical components periodically.

The 3D printer is a high ROI product. It combines high manufacturing speed and performance, suitable for over 20 dental applications.

Applications:

- Surgical guides
- Implant models
- Denture teeth
- Casting
- Splints
- Try-in
- Temporary restorations
- Indirect bonding trays
- Gingiva



Fast

Fast printing for an entire platform



Open system

Compatible with 3rd party resin brands



Reliable

Adopt one of the most reliable optical engines



User-friendly

Well-designed and easy to operate



Technical support

Fast and quality support

Technical Specifications

Build volume	5.67 × 3.19 × 7.48 inch (144 × 81 × 190 mm)
Pixel Size	75 μm
Dynamic Layer Thickness	0.025~0.1 mm
Technology	DLP
Print Speed	Up to 40mm (1.5 inches) / 1 hour (Depending on the resin type and slicer settings)
Materials	ShapeMaterials Dental Series / Open System
Touchscreen	7"
Device Dimension	16.54×15.75×23.78 inch (420×400×604 mm)



Shape 1+ Ortho [\(Professional 3D printer\)](#)

Solution For Orthodontics Practices & Labs

Shape 1+ Ortho is plug-and-play without maintenance hassles. Equipped with the long-service-time DLP light engine, users don't need to pay attention to periodically repairing or replacing any optical components.

It's suitable for users that require a more extensive building platform, create many applications per week, don't have time for reprints of models, and require high accuracy all the time.

Applications:

- Surgical guides
- Study models
- Wax up models
- Models for aligners, retainers, and mouthguards
- Splints
- Try-in
- Denture bases
- Gingiva

Fast
Fast printing for an entire platform

Open system
Compatible with 3rd party resin brands

Reliable
Adopt one of the most reliable optical engines

User-friendly
Well-designed and easy to operate

Technical support
Fast and quality support

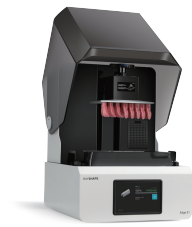
Technical Specifications	
Build volume	7.56 x 4.25 x 7.48 inch (192 x 108 x 190 mm)
Pixel Size	100 μm
Dynamic Layer Thickness	0.025~0.3 mm
Technology	DLP
Print Speed	Up to 80mm (3 inches) / 1 hour (Depending on the resin type and slicer settings)
Materials	ShapeMaterials Dental Series / Open System
Touchscreen	7"
Device Dimension	16.54x15.75x23.78 inch (420x400x604 mm)

Comparison table of the product series



	Edge E1	Shape 1+ Dental	Shape 1+ Ortho	P400 Dental
Technology	LCD	DLP	DLP	DLP
XY Resolution	50 μm	75 μm	100 μm	65 μm
Type	Chair-side	Chair-side / labs	Chair-side / labs	Industrial-grade
Optical system service life	0.5 year	Over 3 years	Over 3 years	Over 3 years
Applications	<ul style="list-style-type: none"> <input checked="" type="checkbox"/> Implants <input checked="" type="checkbox"/> Orthodontics <input checked="" type="checkbox"/> Prosthodontics 	<ul style="list-style-type: none"> <input checked="" type="checkbox"/> Implants <input checked="" type="checkbox"/> Orthodontics <input checked="" type="checkbox"/> Prosthodontics 	<ul style="list-style-type: none"> <input checked="" type="checkbox"/> Orthodontics 	<ul style="list-style-type: none"> <input checked="" type="checkbox"/> Implants <input checked="" type="checkbox"/> Orthodontics <input checked="" type="checkbox"/> Prosthodontics
Maintenance work	Replacing the mono LCD screen periodically	None	None	None
Material system	100% Open Material System	100% Open Material System	100% Open Material System	100% Open Material System
Target customers	<ul style="list-style-type: none"> <input checked="" type="checkbox"/> Entry level dental practices <input checked="" type="checkbox"/> Small labs 	<ul style="list-style-type: none"> <input checked="" type="checkbox"/> Dental practices <input checked="" type="checkbox"/> Small & medium dental labs 	<ul style="list-style-type: none"> <input checked="" type="checkbox"/> Dental practices <input checked="" type="checkbox"/> Small & medium dental labs 	<ul style="list-style-type: none"> <input checked="" type="checkbox"/> Medium & large dental labs <input checked="" type="checkbox"/> Dental practices

Comparison table of the product series



	Edge E1	Shape 1+ Dental	Shape 1+ Ortho	P400 Dental
Technology	LCD	DLP	DLP	DLP
XY Resolution	50 µm	75 µm	100 µm	65 µm
Type	Chair-side	Chair-side / labs	Chair-side / labs	Industrial-grade
Optical system service life	0.5 year	Over 3 years	Over 3 years	Over 3 years
Applications	<ul style="list-style-type: none"> ☑ Implants ☑ Orthodontics ☑ Prosthodontics 	<ul style="list-style-type: none"> ☑ Implants ☑ Orthodontics ☑ Prosthodontics 	<ul style="list-style-type: none"> ☑ Orthodontics 	<ul style="list-style-type: none"> ☑ Implants ☑ Orthodontics ☑ Prosthodontics
Maintenance work	Replacing the mono LCD screen periodically	None	None	None
Material system	100% Open Material System	100% Open Material System	100% Open Material System	100% Open Material System
Target customers	<ul style="list-style-type: none"> ☑ Entry level dental practices ☑ Small labs 	<ul style="list-style-type: none"> ☑ Dental practices ☑ Small & medium dental labs 	<ul style="list-style-type: none"> ☑ Dental practices ☑ Small & medium dental labs 	<ul style="list-style-type: none"> ☑ Medium & large dental labs ☑ Dental practices

Post-processing machines



ShapeWash 020S

Ultrasonic Cleaning, Smart and Efficient Device

Resin 3D prints require pretty thorough cleaning after printing from your machine. Can help you clean the parts in no time, and without damaging your resin prints.



ShapeCure

UV Curing Station For Dental Practices & Labs

The ShapeCure UV curing machine is for the secondary curing of printed parts to obtain better performance part. It works well with Edge E1 and Shape 1+ series.



ShapeCure +

UV Curing Station For Mass Production

The ShapeCure+ is for the secondary curing of printed parts to obtain better performance. The station is suitable for mass production and bigger 3D models.

RAYSHAPE dental resins



Soft Pink

● Pink



Model 1

● Orange ● Grey ● Ivory



Record Model

○ White



Cast

● Green



DT

● Pink



TT

● Ivory A2 ● Ivory A3



Ortho Model

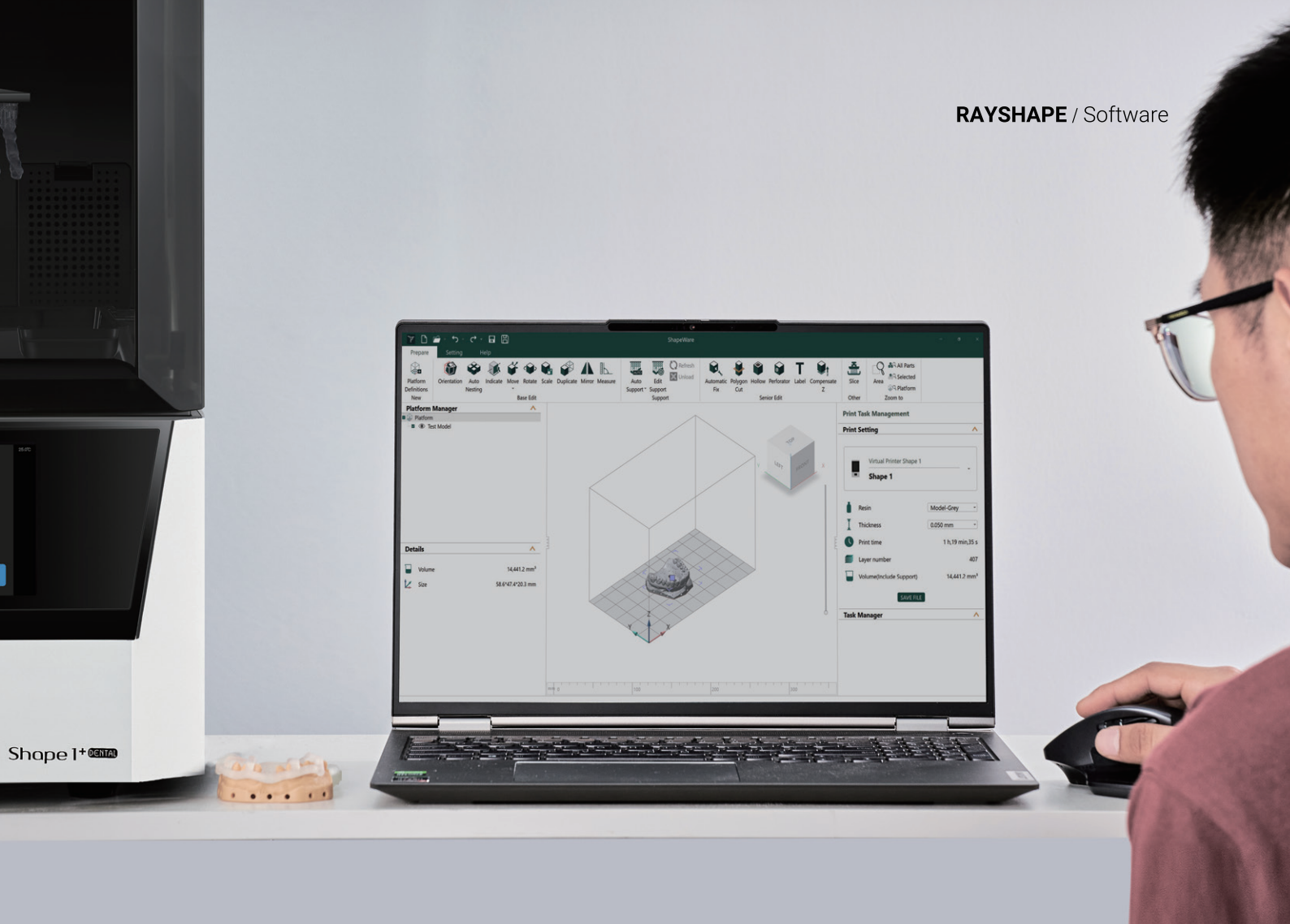
● Orange ● Grey ● Ivory



SG

○ Translucent

✓ 100% Open Material System
use any suitable third party material



ShapeWare

The software allows dental labs and clinics to create 3D printable files on RAYSHAPE 3D printers. Combines the power of design, engineering, and manufacturing into one platform.



Free software



User friendly



Free advanced editing functions



Open to 3rd party resin brands

Our customers' testimonials



" 3D printing on RAYSHAPE for dentistry brings speed and efficiency into Qlab. Easy to master, open source solution and support help is at hand from RAYSHAPE team."



Alaa Abou Hasan
Director of Qlab
London, UK



" The quality of the 3D printed parts from RAYSHAPE is great and the accuracy is what we expected."



Dr. Lv Haoxin
Dental Doctor Clinic
Suzhou, China



" RAYSHAPE dental solutions helped us with our digital transformation. The printers are cost-effective, plus the technical support service is excellent. We are delighted with the cooperation so far."



Steven Sung
President of BenQ Hospital Dentistry
Suzhou, China




" As a dental lab, we're always looking for the best equipment, and integrating the Shape 1+ Dental Series DLP 3D printers into our workflow for continuous production was a good move to increase productivity."



Jason Liu
Technical Director of Jiahong DentalLab
Shenzhen, China

RAYSHAPE

www.rayshape3d.com 

[in](#) | [Twitter](#) | [Instagram](#) | [Facebook](#) | [YouTube](#)



sales.os@rayshape3d.com
Contact the sales team for more information