

+
**WE
KNOW
ENDO.**



Gutta-Smart™ + Conform Fit™
Cordless Obturation Device Gutta-Percha

The warm vertical solution
that flows together



Optimize your obturation with the complete, low-temperature solution

Fill canals conveniently and reliably with Gutta-Smart™ cordless obturation device and Conform Fit™ gutta-percha master cones. Designed to work together, they feature the same low-temperature flow characteristics and radiopacity for a total warm vertical obturation solution.



The efficiency of a total solution. Paired with the enhanced fit of Conform Fit master cones, Gutta-Smart provides the efficiency you expect in a complete obturation solution.



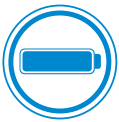
Patient safety. You can feel confident knowing the unique formula is not made with natural rubber latex.



Gutta-percha with low-temperature flow. In both Conform Fit master cones and Gutta-Smart cartridges, the gutta-percha formula flows at a lower temperature, requiring less heat from the handpieces.



The right fit you can feel. Conform Fit master cones provide a snug apical fit for accurate tug-back, while the cordless Gutta-Smart handpieces provide precise control and excellent tactile feedback.



All-day power*. A single charge gives you the power to complete an entire day's work.



Durable, cordless performance. Well-balanced, lightweight and comfortable to use, both handpieces are cordless for freedom of movement.

*The battery capacities of the Flow and Pack handpieces allow for them to be used up to five procedures per day on a single charge.



The efficiency of a total solution

At Dentsply Sirona, we are committed to developing solutions that empower you to provide better, safer endodontics. Gutta-Smart™ provides convenient and reliable obturation when used with Conform Fit™ as a total solution.



1. As compared to Dentsply Sirona Calamus; data available. 2. As compared to Dentsply Sirona Calamus Dual; data available.
*The battery capacities of the Flow and Pack handpieces allow for them to be used up to five procedures per day on a single charge.



Patient safety

Unlike traditional gutta-percha, our proprietary formulation is not made with natural rubber latex. It also can be used at a lower working temperature, reducing the risk of harm to the periodontal ligament (PDL), which can be associated with higher heat.



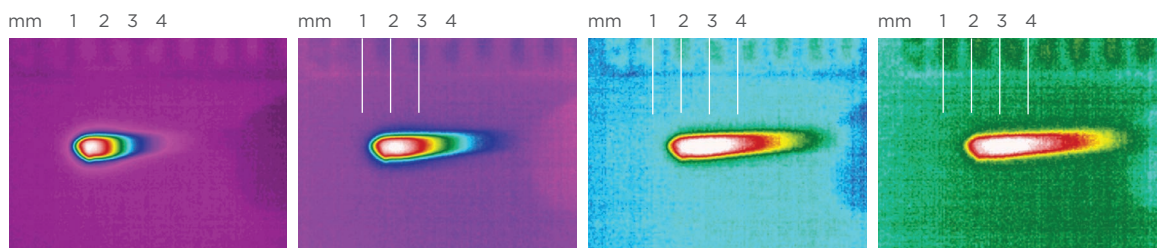
Gutta-percha with low-temperature flow

The gutta-percha formula offers advanced thermal properties that enable it to flow at a lower temperature — and allow heat transfer up to 4 mm. Its unique formula also offers optimal radiopacity and ease of retreatment.

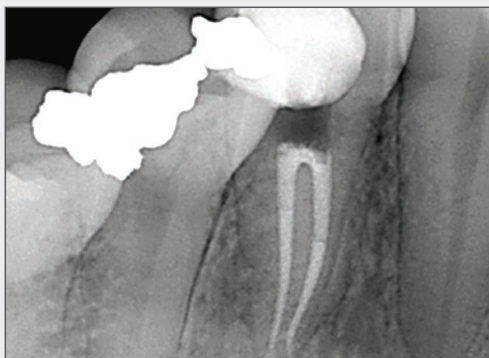
Advanced thermal properties

Heat transfers up to 4 mm beyond the heat source.

Time-lapse thermal images demonstrate the heat transference within the gutta-percha.³



Consistent fill without radiograph transition lines



Using different formulations of gutta-percha in one case can cause varying degrees of opacity.

Image courtesy of Dr. Phillip Bell, Mooresville, NC



Gutta-Smart™ and Conform Fit™ feature the same advanced gutta-percha for radiographic consistency.

Image courtesy of Dr. Nathaniel Behrents, Fayetteville, AR

³. Source: Internal testing; data available.



The right fit you can feel

Precision-matched Conform Fit™ master cones deliver a superior apical fit and accurate tug-back. Used together for a total solution, Gutta-Smart™ cartridges provide consistent tactile feedback with easier access and visibility into the canal.⁴

Improved heat transfer and flow at lower temperature

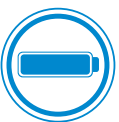
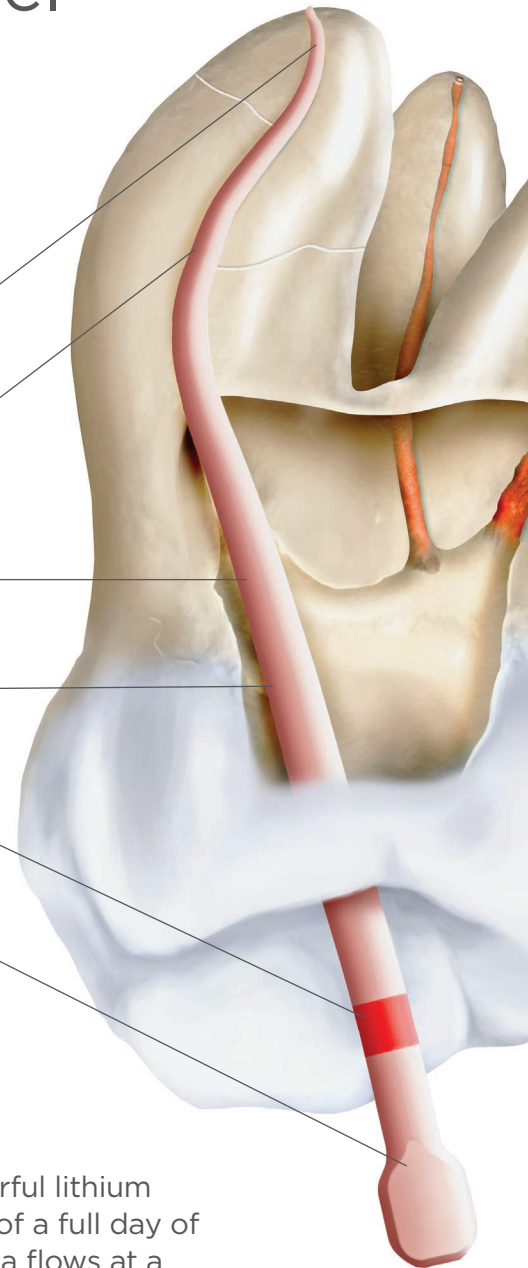
Variable taper for a precise fit and accurate tug-back

Not made with natural rubber latex for enhanced patient safety

Modern manufacturing technique for consistent shape and quality

Part of a system-based solution for simplicity

Convenient tab for easy identification and handling



All-day power*

The ergonomic Gutta-Smart handpieces feature a powerful lithium iron phosphate battery that gives you the convenience of a full day of treatments on a single charge. Because the gutta-percha flows at a lower temperature, the handpieces are ready to use in seconds.



Durable, cordless performance

The cordless handpieces are durable and shock resistant with a lightweight, comfortable feel. Each features a 360° activation ring for freedom of movement. In addition, the heating elements are better insulated for improved patient safety.⁵

4. As compared to Dentsply Sirona Calamus Dual; data available. 5. As compared to Dentsply Sirona Calamus; data available.
*The battery capacities of the Flow and Pack handpieces allow for them to be used up to five procedures per day on a single charge.



Gutta-Smart™ + Conform Fit™

Product references

Gutta-Smart Cordless Obturation Device



Gutta-Smart Kit Contents	Item#
	B00GSIQ000KIT
1 Flow Handpiece	
1 Pack Handpiece	
1 Base Station	
2 Gutta-Percha Cartridges	
3 Electric Heat Pluggers	
1 Heating Element	
1 Bending Tool	
1 Power Adapter + 4 Universal Plugs	
2 Cleaning Caps	

Gutta-Smart Conform Fit Gutta-Percha Cartridges



Description	Pack	Item#
20 gauge	10-pack	BNSGSIQA0020G
23 gauge	10-pack	BNSGSIQA0023G
25 gauge	10-pack	BNSGSIQA0025G

Gutta-Smart Thermal Response Tip



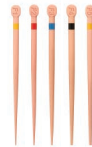
Quantity	Item#
1 TIP	B00GSIQ100000

Gutta-Smart Electric Heat Plugger



Description	Pack	Item#
Small (40/.025)	1 ea.	B00GSIQ100SML
Medium (50/.05)	1 ea.	B00GSIQ100MED
Large (60/.06)	1 ea.	B00GSIQ100LRG

ProTaper Gold® Gutta-Percha Points



Description	Pack	Item#
Yellow F1	60-pack	A241X00000100
Red F2	60-pack	A241X00000200
Blue F3	60-pack	A241X00000300
Black F4	60-pack	A241X00000400
Yellow F5	60-pack	A241X00000500
Assorted	60-pack	A241X00090100

ProTaper Next® Gutta-Percha Points



Description	Pack	Item#
Red X2	60-pack	B00PNGPF000X2
Blue X3	60-pack	B00PNGPF000X3
Black X4	60-pack	B00PNGPF000X23
Yellow X5	60-pack	B00PNGPF000X45

WaveOne® Gold Gutta-Percha Points



Color	Size	Pack	Item#
Yellow	Small	60-pack	A175X00000S00
Red	Primary	60-pack	A175X00000P00
Green	Medium	60-pack	A175X00000M00
White	Large	60-pack	A175X00000L00

All images are the property of Dentsply Sirona, Inc. unless otherwise noted.



DENTSPLY Tulsa Dental Specialties
DENTSPLY International, Inc.
608 Rolling Hills Drive
Johnson City, TN 37604, USA
Made in USA
dentsplysirona.com



DENTSPLY DeTrey GmbH
De-Trey-Strasse 1
D-78467 Konstanz
Germany

