



[www.zumaxmedical.com](http://www.zumaxmedical.com)



## OMS2380/OMS2360 Dental Microscope

*For more information, please contact:*

**ZUMAX MEDICAL CO. LTD.**

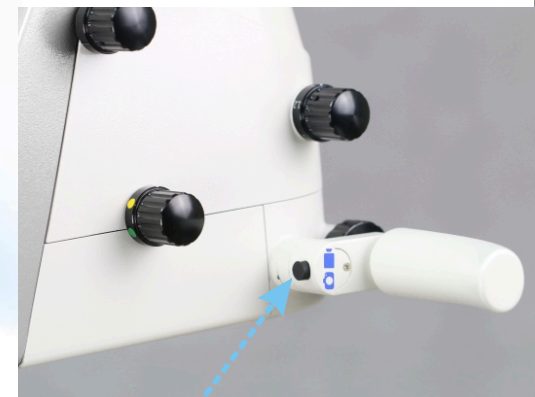
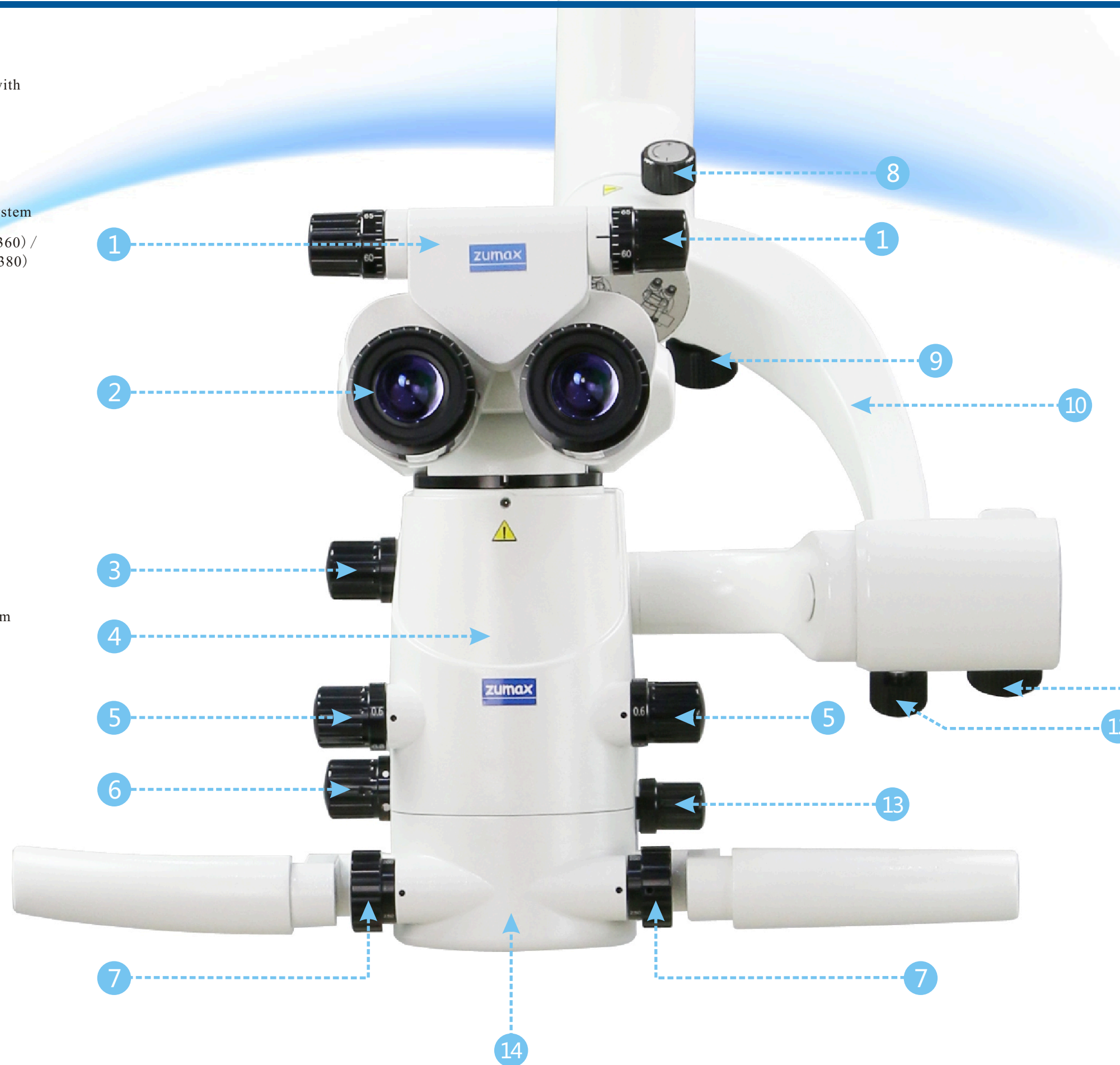
5 Zhiying Street, Suzhou New district,  
Suzhou, Jiangsu 215129, P.R. China  
Tel. +86(512)6665 0502  
Fax. +86(512)6665 0836  
[www.zumaxmedical.com](http://www.zumaxmedical.com)  
Email: [sales@zumaxmedical.com](mailto:sales@zumaxmedical.com)



**We Create Value  
For Our Customers  
With Our Service**



- 1 0° -180° inclinable binocular tube with PD adjusting knob
- 2 Wide Field Eyepieces
- 3 Integrated Laser Filter (optional)
- 4 Integrated Full HD Video Camera System
- 5 6-step magnification changer (OMS2360) / Zoom magnification changer (OMS2380)
- 6 Illumination Spots and Filters
- 7 Fine Focusing knob
- 8 L/R Friction Knob
- 9 L/R Balancing Knob
- 10 120° Balancing Arm
- 11 F/B Balancing Knob
- 12 F/B Friction Knob
- 13 Brightness intensity control knob
- 14 VarioDist Objective Lens Variable working distance 200-450mm
- 15 Photo & Video Button







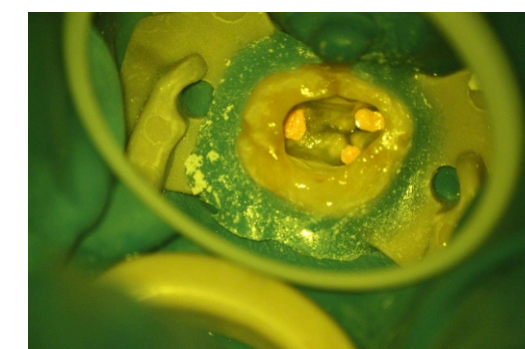
## Integrated LED illumination

LEDs present many advantages over Halogen or Xenon light sources including lower energy consumption, longer lifetime, improved robustness and greater durability and reliability. In addition LEDs operate at a safe, low voltage, instead of the 25K volts commonly found in xenon lighting, but also have a light temperature characteristic of natural daylight. Daylight enhances the visualization and allows much better photography and documentation and makes it absolutely natural.



Without filter

## Illumination Spots and Filters



Yellow filter



Halogen light



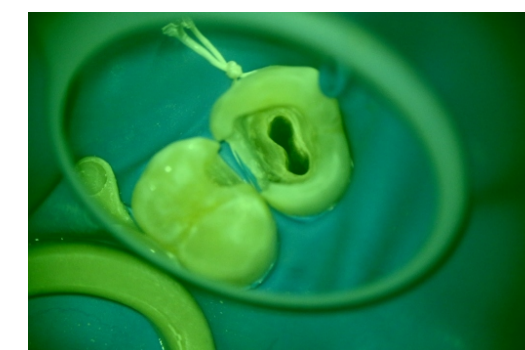
LED light

### Integrated laser filters (optional)

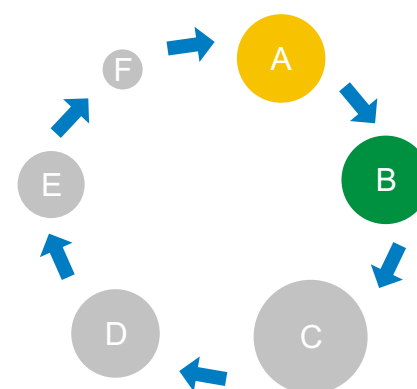
Argon: 488~514nm  
Diode: 660nm  
Diode: 800~830nm  
Diode: 980nm  
Erbium: 2780~2940nm  
NdYAG: 1064nm  
CO<sub>2</sub>: 10600nm

### Integrated Yellow & Green Filter

Yellow filter: Prevents premature curing of composite.  
Green filter: Improves detail visibility by enhancing the (Red free) contrast of tissue with a strong blood supply.



Green filter (Red free)



- A. Yellow filter
- B. Green filter
- C. Large spot
- D. Middle spot
- E. Small spot
- F. Micro spot



### High Quality optics, multi coatings

Optics made of imported glass from Germany to reduce the optical aberration. All lenses are multi-coated and anti-reflective and apochromatic.



### 0° – 180° inclinable binocular tube

Inclinable binoculars feature the widest range of any binoculars for user comfort and enhanced ergonomics for surgeons of all Heights.



### Eye PD Adjusting Knob

Pupillary distance accurate numbers have been marked on the knob, the dentist can conveniently and quickly adjust to their eye Pds.



### Wide field eyepieces

The wide field eyepieces are easily pushed into the binocular tube and have integrated eyecups with stepless adjustment. The eyepieces are perfectly suited for surgeons who wish to work with their eyeglasses on as eye refraction can easily adjusted with a high range of  $\pm 7D$  diopter.



--200mm

250mm

--450mm

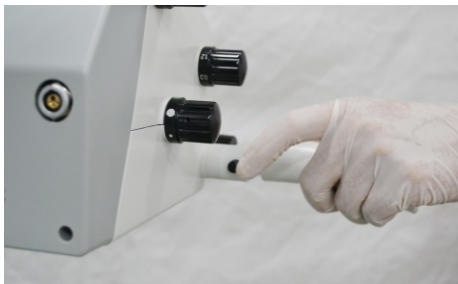
### Integrated VarioDist Objective Lens

Working distance range: 200mm~450mm, best suited for dentistry.

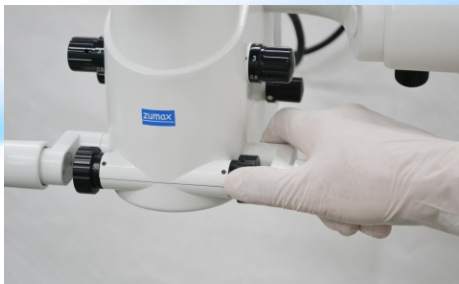




One hand operation



Taking Photo & Video by press the button



Adjusting the fine focusing knob



Adjusting the brightness intensity



Changing the Magnification

6-step Magnification Changer (OMS2360)

Example with 12.5x eyepieces:

Magnification Changer	0.3x	0.5x	0.8x	1.2x	2.0x	3.0x
Magnification	1.4x~24.2x					
Diameter of Field-of-view(mm)	151~9.2					

Zoom Magnification Changer (OMS2380)

Example with 12.5x eyepieces:

Magnification Changer	0.4x~2.4x
Magnification	1.8x~19.4x
Diameter of Field-of-view(mm)	123.8~11.6



The magnification changer knobs on both sides of the microscope head allow the user to quickly and conveniently select the optimum magnification, from an overview of an entire arch to high magnification for precise and close examination of each case. 6-steps are best suited for Dentistry as it covers all dental procedures.



Super Balancing Arm

This Balancing Arm assures a ultra-smooth, fluid and perfect balance during repositioning of the microscope, even when external accessories have been attached, it balances the weight allowing smooth handling.



## External Photo and Video Solutions



Adapter for CANON/SONY/  
NIKON SLR camera



Adapter for SONY/Canon/Nikon cameras



Adapter for CANON/SONY  
digital camcorder



Easy 360/Easy 360 Plus Adapter  
for Mobile Phone

## Integrated Full HD camera with SD memory card

► Zumax introduces you outstanding HD resolution and superior color performance and fidelity and economical too. With outstanding performance, the camera delivers a whopping 1080/60P resolution from HDMI output with increased resolution up to 900 TV lines.

► Recording system as option that has the ability to take a still image or a video and save all data onto an internal SD memory card. Review photos by mouse at once.

► Multiple shooting methods, by Wireless Control Set or by Photo & Video Button on both handles





## Pendulum Function

This function allows the users to remain in an upright viewing position, by changing the direction of the optic pod without changing the direction of the binocular head thereby enhancing user comfort and ergonomics.



Binocular Rotation Ring

+



Binocular Extender

or



Extender & Beam Splitter  
(20% : 80% or 50% : 50%)



25° right inclination



Vertical position



25° left inclination

## MORE OPTIONAL ACCESSORIES



### WirelessST Shutter Foot Pedal for SLR Camera/Mobile Phone

This wireless WIFI enabled shutter remote control by footpedal for SLR cameras allows shutter release without touching the camera. Therefore, problems of sterility, control and jerky movements and vibration during photography are eliminated.



### Laser Filter

This filter can be used for the following laser wavelengths:  
Diode Laser: 780-830nm;  
Nd-YAG: 1064nm;  
Er-YAG: 2940nm



### Dual Iris Diaphragm

Dual iris diaphragm is used to increase the depth of field.



Easy360 Mobile Phone Adapter



Easy360 Plus Mobile Phone Adapter



Rota 360 Digital Camera Adapter



Nikon/Sony/Canon Digital Camcorder Adapter



Nikon/Sony/Canon Digital Camera Adapter



Binocular Rotation Ring



Flashlight adapter



Extender & Beam Splitter  
(20% : 80% or 50% : 50%)



Binocular Extender





### OMS2380 Standard-level

- ▶ “H” floor stand with wheels
- ▶ 0-180 deg inclinable binocular tube with PD adjusting device
- ▶ Integrated LED illumination
- ▶ 600mm Second arm
- ▶ Super Balancing Arm
- ▶ Integrated yellow & green filters, and illumination spots
- ▶ Zoom magnification changer
- ▶ VarioDist Lens 200-450mm
- ▶ 12.5x eyepieces

### OMS2380 Professional-level

- ▶ OMS2380 Standard-level
- ▶ Integrated full HD camera with SD memory system
- ▶ 30 deg binocular extender & Beam splitter combination
- ▶ Rotation Ring

#### Optional

- ▶ Digital Camera or Camcorder Adapter (Sony/Nikon/Canon) or Easy 360/Easy 360 Plus Mobile Phone adapter
- ▶ Wireless foot pedal for digital camera
- ▶ Inner power supply for digital camera, camcorder or mobile phone



### OMS2360 Standard-level

- ▶ “H” floor stand with wheels
- ▶ 0-180 deg inclinable binocular tube with PD adjusting device
- ▶ Integrated LED illumination
- ▶ 600mm Second arm
- ▶ Super Balancing Arm
- ▶ Integrated yellow & green filters, and illumination spots
- ▶ 6-step magnification changer
- ▶ VarioDist Lens 200-450mm
- ▶ 12.5x eyepieces

### OMS2360 Middle-level

- ▶ OMS2360 Standard-level
- ▶ Integrated full HD camera with SD memory system
- ▶ 30 deg binocular extender & Beam splitter combination
- ▶ Rotation Ring

#### Optional

- ▶ Digital Camera or Camcorder Adapter (Sony/Nikon/Canon) or Easy 360/Easy 360 Plus Mobile Phone adapter
- ▶ Wireless foot pedal for digital camera
- ▶ Inner power supply for digital camera, camcorder or mobile phone

# TECHNICAL DATA

## Basic configuration

	OMS2380	OMS2360
Magnification system	Manual zoom system; with apochromatic 1:6 ratio; magnification factor $\gamma = 0.4\times -2.4\times$	6-step manual magnification changer $\gamma = 0.3\times, 0.5\times, 0.8\times, 1.2\times, 2\times, 3\times$
Tubes	0° -180° inclinable binocular tube with PD adjusting knob, f=170mm	
Eyepieces	12.5x wide-field eyepieces; also suitable for eyeglass wearers	
Focus	VarioDist Objective Lens Variable working distance 200-450mm	
Illumination System	Integrated LED illumination >70,000Lx at working distance 250 mm Large light spot diameter: $\Phi 87\text{mm}$ at working distance 250 mm Yellow and green integrated filter	
Handgrip	360° Rotatable Handgrip, can be sterilized	
Mount mobility	Super Balancing Arm	
Construction	Floor Stand with "H" shaped base, 632×632mm	

## Optional configuration

Eyepieces	10×/16×/20× wide-field eyepieces, also suitable for eyeglass wearers
Integrated Video System	64G Memory Card Wireless photo&video set for integrated full HD video camera (optional)
External Video Solutions	Adapter for Canon/Sony/Nikon SLR cameras Rota 360° adapter for Canon/Sony/Nikon SLR cameras Adapter for Sony Alpha series/Canon/Nikon Mirrorless cameras Adapter for Canon/Sony Digital Camcorders Easy 360° /Easy 360° Plus Adapter for Mobile Phone Binocular Rotation Ring 30° binocular extender and beam splitter combination (20%:80% or 50%:50%) WirelessST Shutter foot control for SLR camera Wireless Foot pedal for mobilephone Inner power supply for Canon/Sony/Nikon SLR cameras or Camcorders Inner power supply for Mobile Phone
Optics	Double Iris Diaphragm Integrated Laser Filter External Laser Filter
Construction	Ceiling Mount , Wall Mount

